

Unit 2: Integumentary System

Unit 2-1 Notes

Integumentary System (_____)

***the largest organ in the body

General Functions:

Protection:

Temperature Homeostasis:

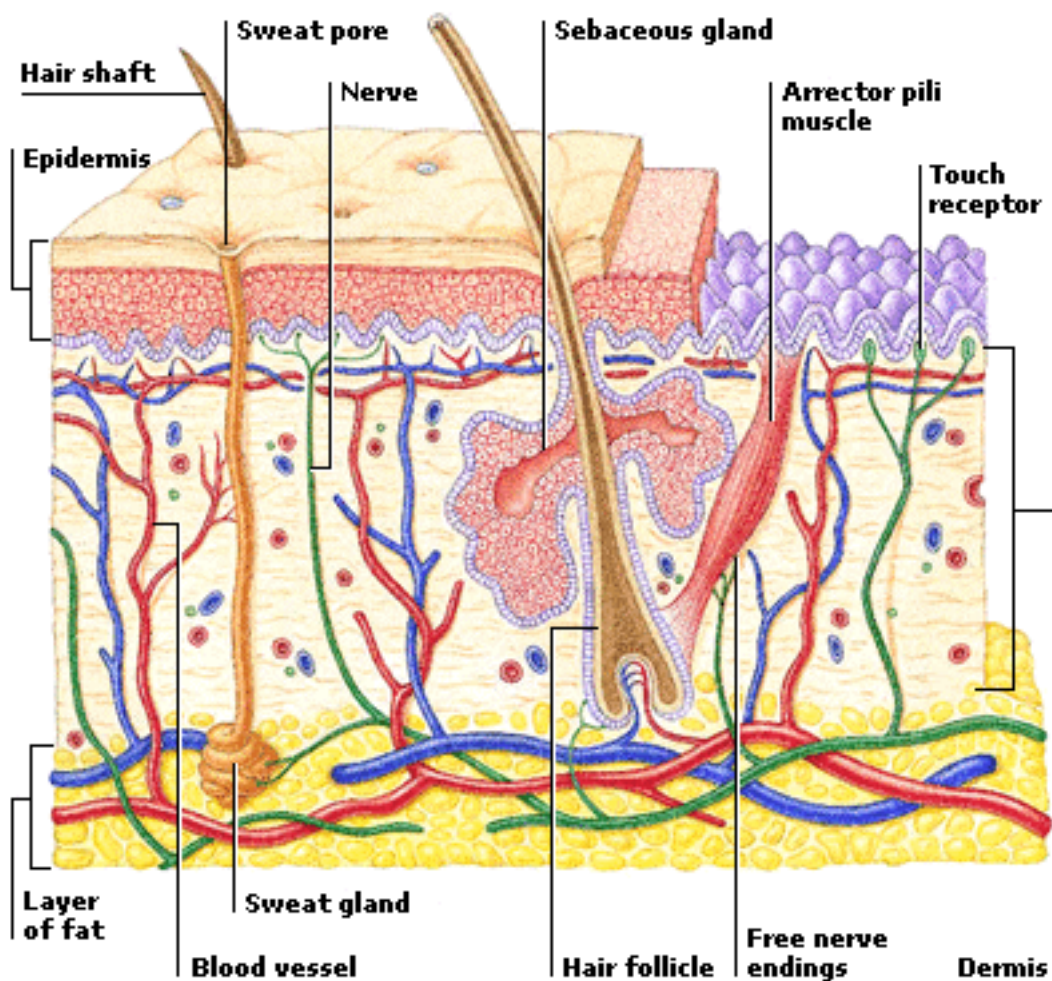
Sensation:

Layers of the skin:

Epidermis

Dermis

Hypodermis



Epidermis: made up of stratified squamous epithelium

Upper layer is _____, filled with keratin (_____)

Lower layer is living cells.

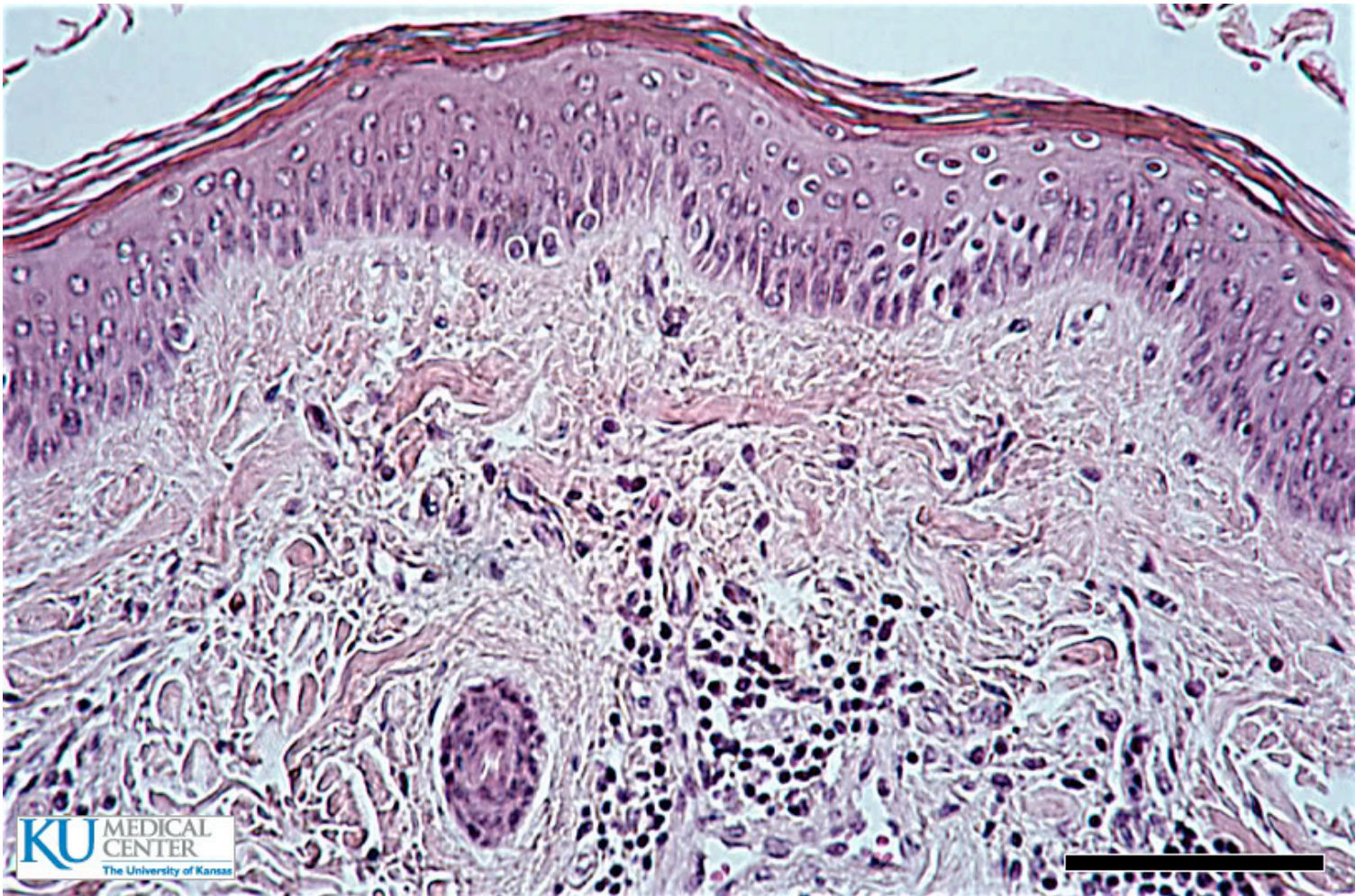
***Epidermis is replaced every 35-45 days



Dermis: made up of strong and flexible _____

***This layer gives skin strength and resilience

Also contains nerves, blood vessels, hair follicles, and sweat glands.



Hypodermis: made up mostly of adipose tissue (_____)

Function: _____

